

3218 Commander Dr. #100
Carrollton, TX, 75006, US
DEA Number: FEI #: 3027255510

Certificate of Analysis

Sample: CA40702001-002

Harvest/Lot ID: 1

Batch#: 06

Batch Date: 07/01/24

Sample Size Received: 2 gram

Retail Product Size: 1 gram

Ordered: 07/01/24

Sampled: 07/01/24

Completed: 07/09/24

PASSED

Page 1 of 1

PRODUCT IMAGE



SAFETY RESULTS



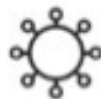
Pesticides
NOT TESTED



Heavy Metals
NOT TESTED



Microbials
NOT TESTED



Mycotoxins
NOT TESTED



Residual Solvents
NOT TESTED



Fibers
NOT TESTED



Water Activity
NOT TESTED



Moisture
NOT TESTED



Terpenes
NOT TESTED

MISC.



Potency

PASSED



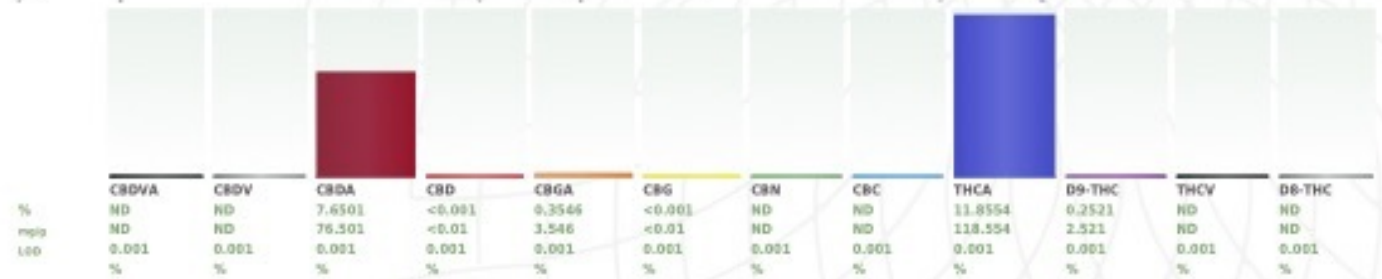
Total THC
10.6492%



Total CBD
6.7091%



Total Cannabinoids
17.6694%



Analyzed by:
N/A

Weight:
N/A

Extraction date:
N/A

Extracted by:
N/A

Analysis Method: SOP-T-30.031.TN & SOP-T-40.031.TN Expanded Measurement of Uncertainty: Flower Matrix d9-THC: ± 0.100, THCa: ± 0.124, TOTAL THC ± 0.112. These uncertainties represent an expanded uncertainty expressed at approximately the 95% confidence level using a coverage factor k=2 for a normal distribution.

Analytical Batch: N/A
Instrument Used: N/A
Running on: N/A

Reviewed On: 07/09/24 12:25:47
Batch Date: N/A

Full spectrum cannabinoid analysis utilizing High Performance Liquid Chromatography with VAPDA detection (HPLC-VAPDA). All cannabinoids have an LOD of 0.01%.

This report shall not be reproduced, unless in its entirety, without written approval from Certified Laboratories/Labstat. This report is a Certified Laboratories/Labstat certification. The results relate only to the material or product analyzed. Test results are confidential unless explicitly waived. Void after 1 year from test, end date. Cannabinoid content of batch material may vary depending on sampling error. Some testing may be performed at Blue Bonnet Labs (DEA#RP0607436). ND=Not Detected, NA=Not Analyzed, ppm=Parts Per Million, ppb=Parts Per Billion. Limit of Detection (LOD) and Limit of Quantitation (LOQ) are terms used to describe the smallest concentration that can be reliably measured by an analytical procedure. RPD=Reproducibility of two measurements. Action Levels are State determined thresholds variable based on uncertainty of measurement (UM) for the analyte. The UM error is available from the lab upon request. The "Decision Rule" for the pass/fail does not include the UM. The limits are based on F.S. Rule 64-4.310.

Jennifer Sawkins

Lab Director

State License # NA
ISO Accreditation # L22-753

Signature

07/09/24

Signed On