

These test results are for Research and Development purposes only

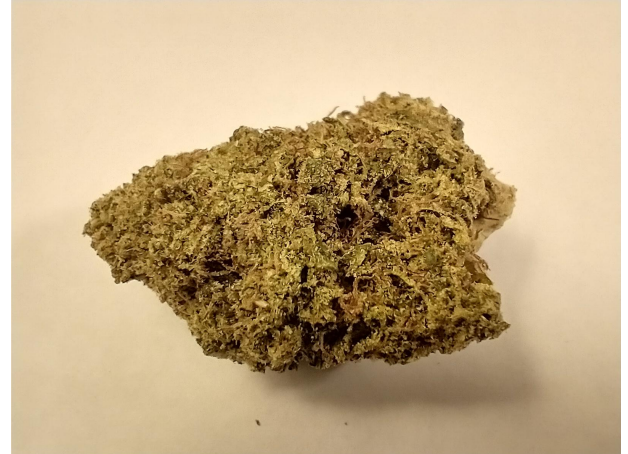
Page 1 of 1

**HWF**

Sample White Apricot

Strain

<b>0.23%</b>	<b>6.00%</b>	<b>37.65%</b>
$\Delta 9$ THC	Total CBD	<b>Total Cannabinoids</b>
<b>Not tested</b>	<b>Pass</b>	<b>376.5</b>
<b>Water Activity</b>	<b>6.65</b>	<b>mg / g Total Cannabinoids</b>
	<b>Moisture</b>	



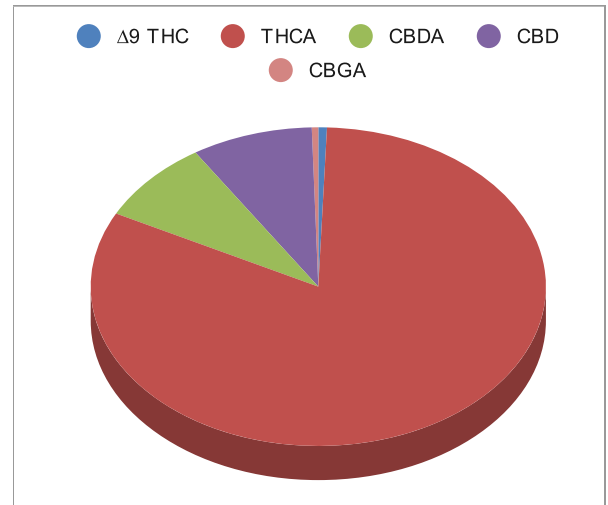
Sample ID **24040500259**  
 Matrix Augmented Flower Biomass

Harvest/Prod Date

Report Created **4/29/2024** Results Valid Until **4/30/2025**


Sample Extracted **4/26/2024 17:05:00** Sample Analyzed **4/27/2024 9:48** Method SOP LO001-R11

Cannabinoids	%Weight	mg/ gram	LOQ(% /w)
$\Delta 9$ THC	0.23	2.3	0.06
THCA	30.87	308.7	0.06
Total THC (THCA*0.877)+9THC	27.30	273.0	0.06
CBDA	3.14	31.4	0.06
CBD	3.24	32.4	0.06
CBN	<LOQ	<LOQ)	0.06
$\Delta 8$ THC	<LOQ	<LOQ)	0.06
CBC	<LOQ	<LOQ)	0.06
CBGA	0.17	1.7	0.06
CBG	<LOQ	<LOQ)	0.06
CBDV	<LOQ	<LOQ)	0.06
CBDVA	<LOQ	<LOQ)	0.06
THCVA	<LOQ	<LOQ)	0.06
CBDQ	<LOQ	<LOQ)	0.06
HHC	<LOQ	<LOQ)	0.09



Total THC and Total CBD are calculated values per OAR 333-064-0100. Cannabinoid values for plant matter samples are reported on a dry weight basis. Water activity action level is 0.65Aw. LOQ= Limit of Quantitation. NR=Not Reported.

[Rogue Research Lab LLC](http://Rogue Research Lab LLC)  
[Rogue River, OR 97537](http://Rogue River, OR 97537) Tel. [541-582-1962](http://541-582-1962)  
[rogueresearchlab.com](http://rogueresearchlab.com)

  
 Craig Berry - Lab Director  
 4/29/24

Results pertain to submitted samples only. Rogue Research Lab LLC makes no claims as to the consumer safety or other risks associated with any detected or non-detected amounts of any pesticides, solvents or other adulterants. This report shall not be reproduced, unless in its entirety, without written approval from Rogue Research Lab LLC. Samples were received in good condition and all QC samples met acceptance criteria of the method; data available upon request. For informational purposes only.